

2025 | GUIDED WALKS | OVERNIGHT STAYS | FLY-IN PACKAGES



avair

Helispirit

# Discover the Bungle Bungle

Guided experiences in Purnululu National Park with breathtaking views from land and sky.







Few adventures compare to exploring the Bungle Bungle and staying overnight in the heart of Purnululu National Park.

### **Acknowledgement to Country**

We acknowledge the Aboriginal and Torres Strait Islander peoples of Australia, recognising the Traditional Custodians of the lands across the Kimberley region. In particular, we honour the Gija and Jaru peoples of Purnululu National Park and the surrounding areas where we live, work, and welcome visitors from near and far.

We pay our respects to their people, cultures, and Elders – past, present, and emerging.

We are committed to respecting the unique cultural and spiritual connections that Aboriginal and Torres Strait Islander peoples have with the land, waters, and seas, as well as celebrating their rich contributions to our society.





## Bungle Bungle Guided Tours

Bungle Bungle Guided Tours is an Accredited Tourism Business offering guided walking tours through the World Heritage-listed Purnululu National Park. Locally owned, we're passionate about looking after the environment and follow best practices in ecotourism to help protect the park for future generations to enjoy.

Bookings 1800 899 029 | [bookings@bbgt.com.au](mailto:bookings@bbgt.com.au) | [bbgt.com.au](http://bbgt.com.au)



## Bungle Bungle Savannah Lodge

Spend a night under the stars in the heart of Purnululu National Park. After a day exploring the Bungle Bungle Range, unwind with a swim in the park's only pool and enjoy a delicious buffet meal prepared by our chefs, featuring fresh local ingredients and native herbs and spices. Relax by the open fire and share stories of your day, with drinks available at the Bungles Bar. Dinner, bed and breakfast packages, as well as guided walking tours, are available.

Bookings 1800 682 213 | [bookings@bbsl.com.au](mailto:bookings@bbsl.com.au) | [bbsl.com.au](http://bbsl.com.au)



## Aviair

Aviair offers scenic flights from Kununurra, providing you with a comfortable return journey. Our aircraft are fitted with high wings, large windows, and air-conditioning, and feature informative pilot commentary to enhance your experience. With the youngest fleet in Kununurra, safety is always our top priority.

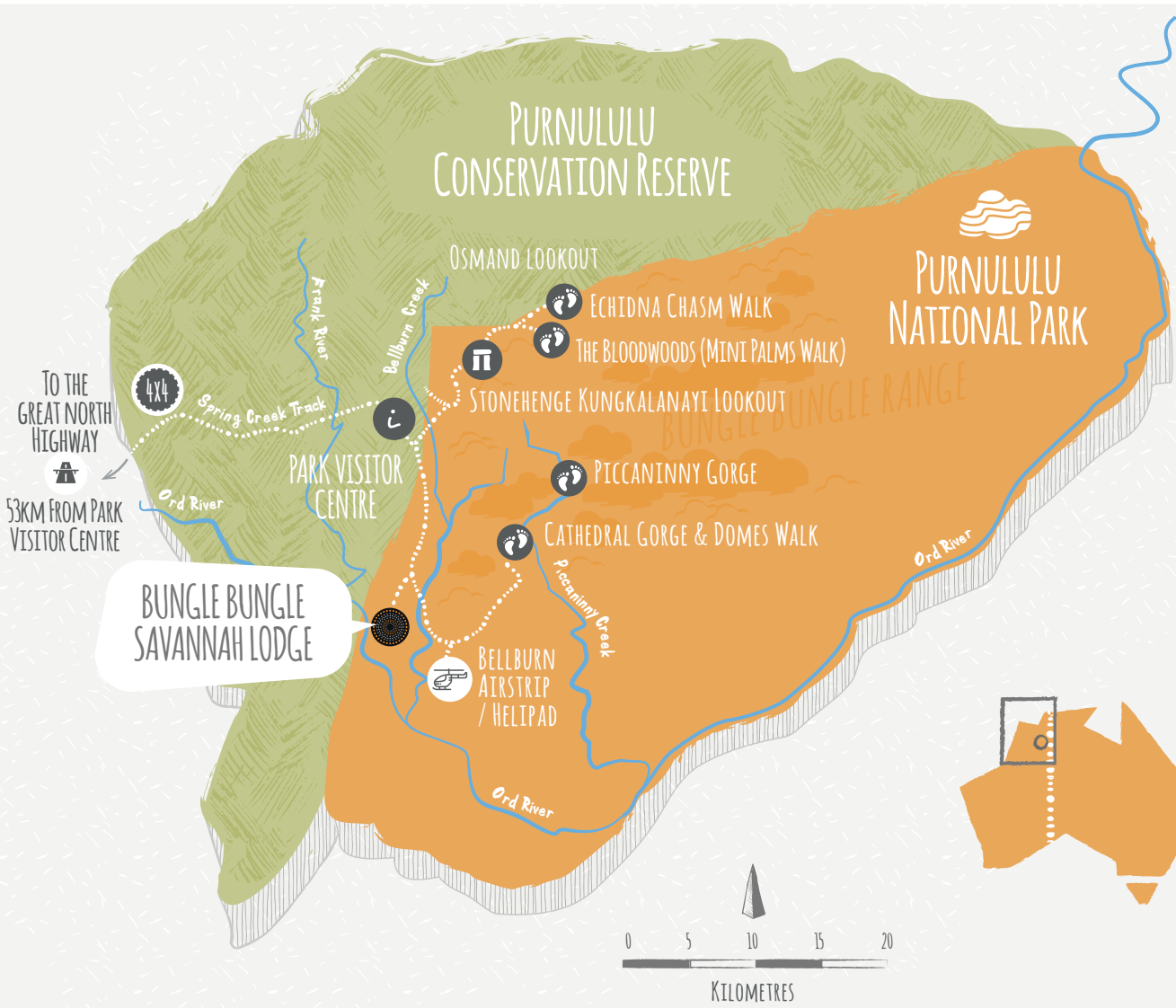
Bookings 1800 095 500 | [bookings@aviair.com.au](mailto:bookings@aviair.com.au) | [aviair.com.au](http://aviair.com.au)



## HeliSpirit

HeliSpirit offers scenic helicopter flights over the Bungle Bungle Range, providing a unique perspective of Purnululu National Park. This unforgettable experience offers amazing photo opportunities and is a highlight of any visit to the area.

Bookings 08 9168 7335 | [bungles@helispirit.com.au](mailto:bungles@helispirit.com.au) | [helispirit.com.au](http://helispirit.com.au)



**Things to Note**

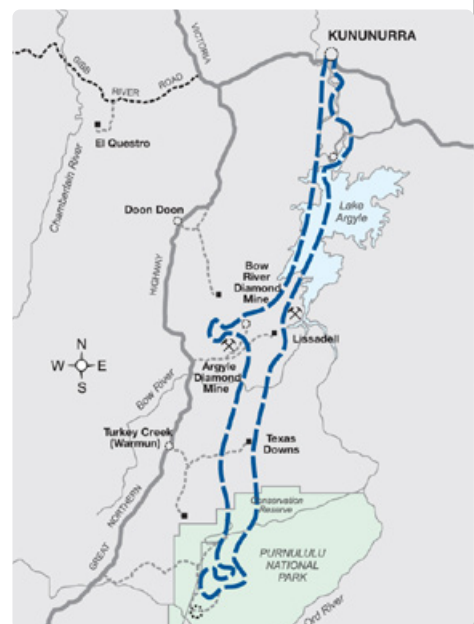
Travel times between destinations can vary depending on road conditions. The park features two main areas of interest: the striking black and orange banded domes, Piccaninny Creek, and Cathedral Gorge at the southern end, and Echidna Chasm and Mini Palms Gorge, located 42 kilometres to the north.

**Things to Bring**

While exploring the park, it's important to carry a first aid kit, plenty of water to stay hydrated, and light snacks for energy. Be sure to wear light cotton clothing, sun protection, and sturdy walking shoes when hiking.

If you're staying overnight, we recommend bringing a hat, sturdy enclosed walking shoes (no leather soles), sunscreen, sun-protective clothing, a day pack, a torch, a refillable water bottle, toiletries, camera and electronic chargers, any required medication, and warm clothing for the cooler evenings.

**Flight path from Kununurra**





# How to Get Here



## By Plane

Aviair offers fly-in packages on their air-conditioned aircraft, departing from Kununurra. You can also enjoy a two-hour return scenic flight from Kununurra for a unique aerial view of the region.



## By Helicopter

HeliSpirit provides helicopter transfers from both Kununurra and Lake Argyle, with additional helicopter tours available from Bungle Bungle Caravan Park (pending Caravan Park opening), Warmun Roadhouse, and Bellburn Airstrip, which is located within Purnululu National Park.



## By Road (Self-Drive)

The turn-off from the Great Northern Highway is approximately 250km south of Kununurra. The journey from the Highway is a 53km drive on an unsealed road with potential for numerous river/creek crossings, and can take 2 hours or more. A 4WD and appropriate gear is essential.







# Discover the Southern End



## Cathedral Gorge & Domes Guided Walk

Your adventure begins with a scenic flight with Aviair from Kununurra, offering stunning views of the Ord River Irrigation Area, Diversion Dam, Carr Boyd Ranges, Osmand Ranges, the Ord and Bow Rivers, as well as the breathtaking Lake Argyle.

After landing on a remote, unsealed airstrip in Purnululu National Park, you'll be met by your guide, who will transport you in an air-conditioned 4WD bus to the Bungle Bungle Range. Here, you'll enjoy a leisurely 3 km guided walk through the striking black-and-orange striped domes on the Domes Walk.

Your guide will also take you into Cathedral Gorge, a remarkable natural space with towering cliffs and unique acoustics. You'll follow the path of Piccaninny Creek, which only flows during the wet season.

The day ends with a scenic flight back to Kununurra, passing over the Argyle Diamond Mine, once home to the iconic and coveted pink diamonds.



### KBB1 | Bungle Bungle Flight + Cathedral Gorge Guided Walk

**Depart:** Kununurra

**Duration:**

9:00am to 5:00pm (April to August)  
6:00am to 2:00pm (September)

**Includes:**

- Scenic flight from Kununurra to Bungle Bungle and return
- Guided walking tour

**Meals:**

Morning tea, packed picnic lunch and afternoon tea

**Price:**

Adult \$999 | Child \$820

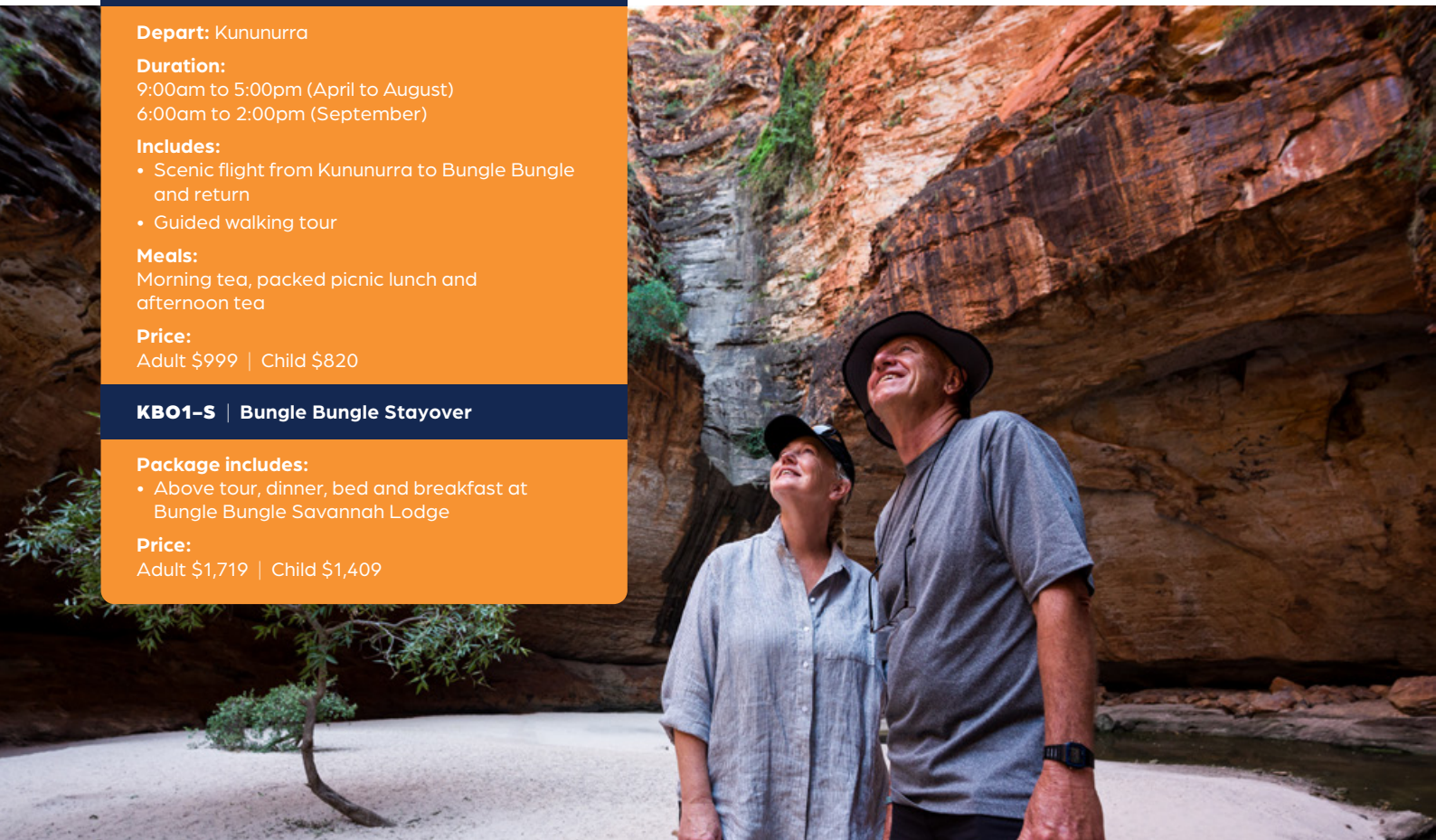
### KBO1-S | Bungle Bungle Stayover

**Package includes:**

- Above tour, dinner, bed and breakfast at Bungle Bungle Savannah Lodge

**Price:**

Adult \$1,719 | Child \$1,409





# Explore the Southern & Northern Ends



## Cathedral Gorge, Domes Walk & Echidna Chasm

Make the most of your time here and uncover the dramatic landscapes of towering red rock gorges and narrow chasms filled with Livistona palms.

Begin your day exploring the iconic Domes and Cathedral Gorge, then enjoy a scenic 65-minute drive along the Western Wall of the Bungle Bungle Range. As you reach the entrance to Echidna Chasm, a rocky trail guides you deeper into the gorge, which gradually narrows to just two shoulders' width. Look up to see the vivid orange walls, glowing with natural light, while Livistona palms cling to the cliffs.

This 1.5-hour walk is moderately challenging and requires a good level of mobility.

**Note: For a more relaxed experience, this tour can be split into two days as part of an overnight package.**



### **KBB3 | Bungle Bungle Flight + Cathedral Gorge, Domes & Echidna Chasm Guided Walk**

**Depart:** Kununurra

**Duration:**  
6:00am to 5:00pm

**Includes:**

- Scenic flight from Kununurra to Bungle Bungle and return
- Guided walking tour

**Meals:**

Morning tea, packed picnic lunch and afternoon tea

**Price:**

Adult \$1,549 | Child \$1,269

### **KB01-SN | Bungle Bungle Overnight Explorer**

**Package includes:**

- 2 x day tours, dinner, bed and breakfast at Bungle Bungle Savannah Lodge

**Price:**

Adult \$1,949 | Child \$1,558







The rocky creek bed of Piccaninny Gorge is classed as a level 6 walk, with no designated track. The hike is up to 10km one-way and requires a high level of fitness & mobility.



# Piccaninny Gorge Heli-Hike



## Helicopter Flight + Piccaninny Gorge Guided Hike

Attention avid hikers – this is the tour for you!

Piccaninny Gorge, a breathtaking destination seldom explored by foot, is typically a challenging three-day return journey. This tour offers a unique opportunity to access the best parts of the Gorge in just one day, thanks to a scenic helicopter ride. The rugged, untouched landscape of the gorge seems almost prehistoric, and once inside, you'll feel as though you've stepped into another world.

Your adventure departs from the HeliSpirit base at Bellburn Airstrip in Purnululu National Park. After a briefing, you'll board a helicopter for a scenic flight over the south-western Bungle Bungle, soaring over "Y" Gorge before reaching the mouth of the stunning Piccaninny Gorge, where we land.

From there, your expert guide will lead you on a 10km hike along a rocky creek bed – the largest gorge in Purnululu National Park. Though challenging, the hike offers unmatched scenic beauty. As you make your way through, you'll witness a landscape few have ever explored.

After the hike, your return helicopter flight will follow Piccaninny Creek along the southern face of the gorge, offering views of Cathedral Gorge and the famous beehive-shaped domes.

**For those looking to fully immerse themselves, this tour can be booked as a two-night stay package. Contact Bungle Bungle Guided Tours for more information.**



### BB4 | Piccaninny Gorge Heli-Hike

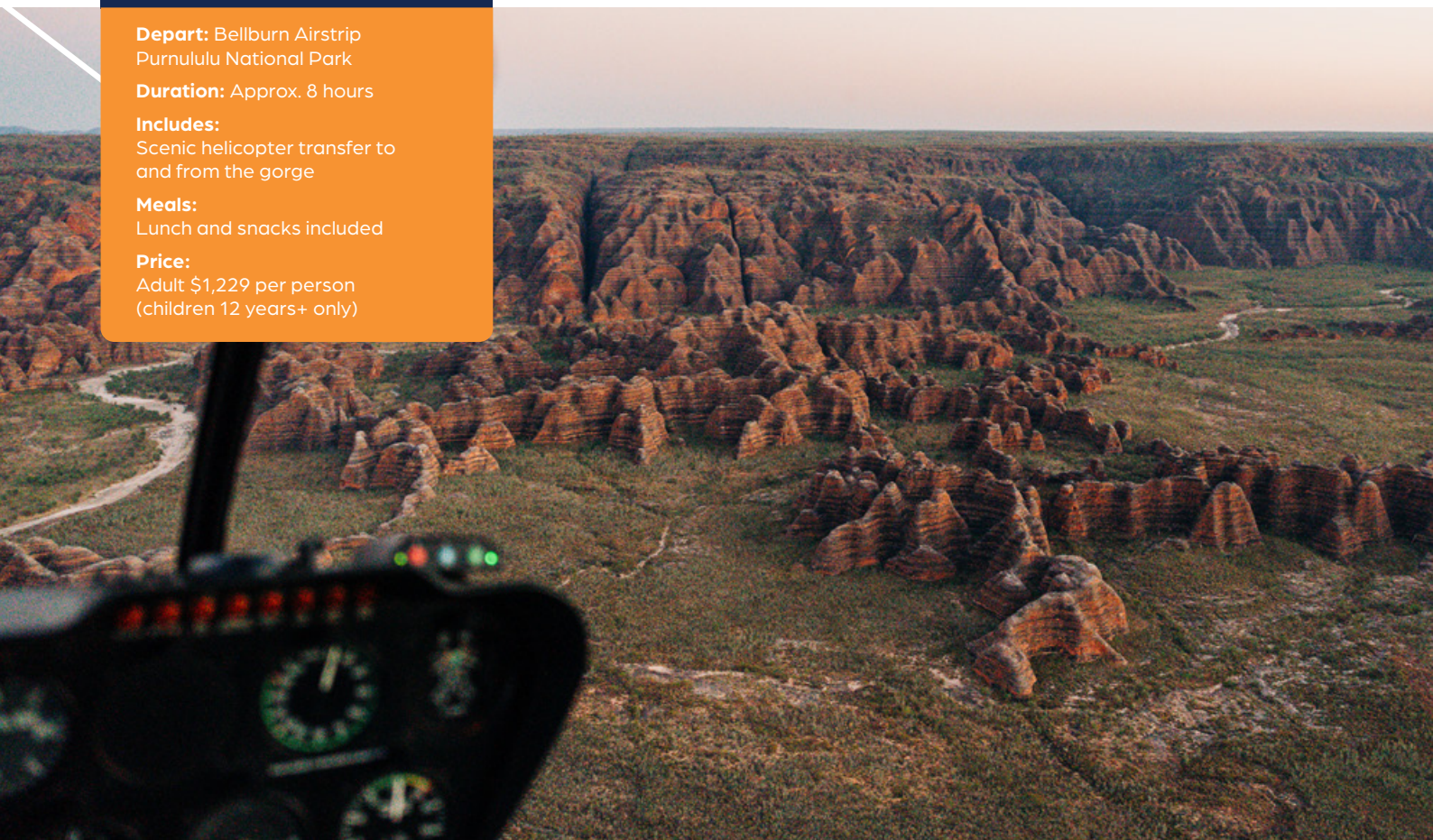
**Depart:** Bellburn Airstrip  
Purnululu National Park

**Duration:** Approx. 8 hours

**Includes:**  
Scenic helicopter transfer to  
and from the gorge

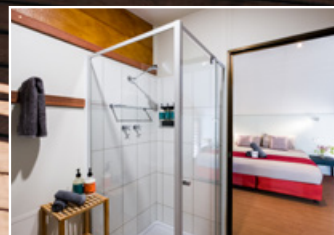
**Meals:**  
Lunch and snacks included

**Price:**  
Adult \$1,229 per person  
(children 12 years+ only)





Eco-accommodation in the heart of World Heritage listed Purnululu National Park.







# Spend the Night Under a Million Stars

## Bungle Bungle Savannah Lodge

Few experiences can rival the adventure of exploring the Bungle Bungle during the day and spending the night in the heart of Purnululu National Park.

Immerse yourself in a landscape 350 million years in the making, then unwind by the pool, enjoy delicious meals, and relax in comfort in your private cabin with an ensuite bathroom. Purnululu is home to some of the best stargazing in Australia. Look up to discover breathtaking views of the Milky Way and the Southern Cross, a constellation rarely visible from the northern hemisphere.

Our eco-friendly cabins are designed for comfort and sustainability. Each features multiple louvre windows for natural airflow, a pedestal fan, bedside tables, wall-mounted lighting, and hotel-quality queen or king split beds. Your private ensuite includes a flushing toilet, heated shower, hand basin and mirror, eco-friendly toiletries, quality towels, and 240-volt solar power. The lodge offers one family cabin, accommodating up to two adults and two children (under 12), with all other cabins designed for two guests.

Check-in 2:00pm • Check-out 10:00am.

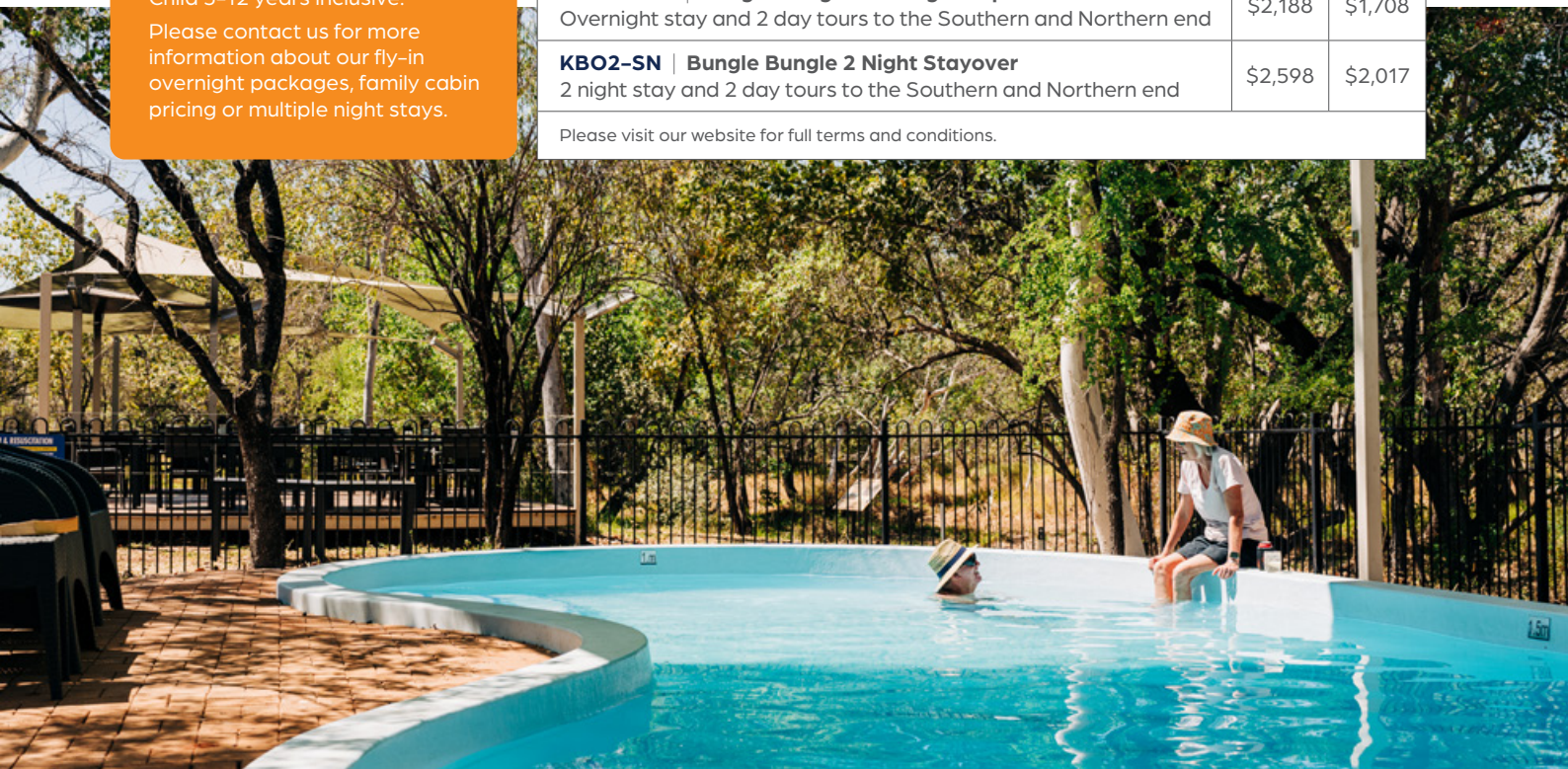
**Adult (per person, twin share):**  
From \$399

**Child (per person):** From \$293

**Single Supplement (per person):**  
\$247

Price per night.  
Child 3–12 years inclusive.  
Please contact us for more information about our fly-in overnight packages, family cabin pricing or multiple night stays.

Fly-in Overnight Packages with Bungle Bungle Guided Tours	Adult	Child
<b>KBO1-S   Bungle Bungle Stayover</b> Overnight stay and 1 day tour to the Southern end	\$1,828	\$1,529
<b>KBB3O   Bungle Bungle Flight + Cathedral Gorge, Domes &amp; Echidna Chasm Guided Walk + Overnight Stay</b> Overnight stay and 1 day tour to Southern and Northern end	\$1,949	\$1,558
<b>KBBO1-SN   Bungle Bungle Overnight Explorer</b> Overnight stay and 2 day tours to the Southern and Northern end	\$2,188	\$1,708
<b>KBO2-SN   Bungle Bungle 2 Night Stayover</b> 2 night stay and 2 day tours to the Southern and Northern end	\$2,598	\$2,017
Please visit our website for full terms and conditions.		





# Scenic Helicopter Flights from Purnululu National Park



## Departing: Bellburn Airstrip

### A18 | Bungle Bungle Domes Special

Flight time: 18 minutes | Cost: \$349 per person

The perfect option for a snapshot of the Bungle Bungle Range, this flight begins at the south west end of the Bungle Bungle Range at "Y" Gorge before flying across the top of the enormous massif to the mouth of the spectacular Piccaninny Gorge. Continue along the southern face of the range, following Piccaninny Creek. Here, you can view the mouth of Cathedral Gorge and fly over the famous orange and black striped sandstone beehive shaped domes.

### A30 | Bungle Bungle Domes & Red Rock Gorges Flight

Flight time: 30 minutes | Cost: \$539 per person

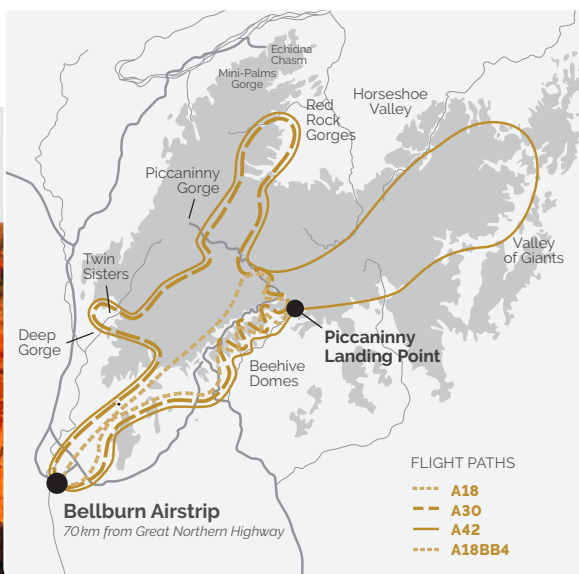
This 30-minute flight takes you over some of the Kimberley's most stunning landscapes. Soar above the hidden red rock gorges at the north-west tip and Horseshoe Valley, then glide over the breathtaking Piccaninny Gorge and Cathedral Gorge. Finish with sweeping views of the iconic striped Bungle Bungle domes – truly a sight to behold.

### A42 | The Ultimate Bungle Bungle Flight

Flight time: 42 minutes | Cost: \$629 per person

As the name suggests, this flight offers unforgettable views of "Y" Gorge, Deep Gorge, and "The Twins". Continue on to the highest point of the Bungle Bungle, where the red rock gorges of the north-west stretch before you. Fly over the Valley of the Giants, past massive sandstone structures, then head south to witness the mouth of Piccaninny Gorge, Piccaninny Creek, Cathedral Gorge, and the striking orange and black striped Bungle Bungle domes.

A minimum of two passengers or the equivalent cost is required to confirm a flight. Maximum seat limit 136 kg. Please visit our website for full terms and conditions.





# Scenic Helicopter Flights from Warmun



Don't have a 4WD? You can still witness the magic of the Bungle Bungle with scenic helicopter flights departing from Warmun and the Bungle Bungle Caravan Park, both located within 1km of the Great Northern Highway.



## W45 | Bungle Bungle & Osmand Range Flight

Flight time: 45 minutes | Cost: \$629 per person

Take to the skies for a bird's-eye view of the striking Red Rock Gorges, Western Wall, and Piccaninny Gorge. Fly over the secluded Osmand Range, where ancient formations and hidden waterholes create a captivating landscape. Commentary enhances the experience.

## W45BB1 | Bungle Bungle Helicopter Flight + Cathedral Gorge Guided Walk

Duration: 9:30am to 4:00pm (6:30am to 1:00pm in September)

Cost: Adult \$1,619 Child \$1,439

Fly over the breathtaking Bungle Bungle and Osmand Range, then travel by 4WD to the stunning beehive domes. Join a guided 3 km walk to explore Cathedral Gorge's unique acoustics and enjoy a picnic. Conclude with a scenic return flight to Warmun.

## + COMBINE WITH W45BB3 | Echidna Chasm Guided Walk

Duration: 6:30am to 4:00pm | Cost: Adult \$1,719 Child \$1,489

Can't get enough of the Bungle Bungle? Add on a guided walk of Echidna Chasm to experience both the North and South Ends.

## W45BB4 | Bungle Bungle Helicopter Flight + Piccaninny Gorge Heli Hike

Duration: 6:20am to 4:00pm | Cost: \$2,149 per person

Fly from Warmun over the remote Osmand Range and Bungle Bungle, landing near Piccaninny Gorge for an adventurous 10km hike through rugged creek beds and towering canyon walls. This exclusive tour is ideal for seasoned hikers, with a scenic flight back at sunset.



\*SUBJECT TO CARAVAN PARK OPENING | BOOKINGS 0408 273 335 | BBCP@HELISPIRIT.COM.AU

# From Bungle Bungle Caravan Park

## BB30 | Bungle Bungle Domes Scenic

Flight time: 30 minutes | Cost: \$539 per person

Experience the magic of Purnululu National Park as you fly over Mabel Downs Cattle Station and the Western Wall. Gaze upon the dramatic landscapes of Deep Gorge and Twin Gorges before gliding over Piccaninny Gorge, home to the park's largest chasm. Conclude your journey with breathtaking views of the famous striped sandstone domes of the Bungle Bungle Range.

## BB40 | Bungle Bungle Domes & Red Rock Gorges

Flight time: 40 minutes | Cost: \$629 per person

Venture beyond Mabel Downs Cattle Station and the Ord River to discover Purnululu National Park. Explore the rugged Western Wall, then soar over the striking red rock gorges of the northern park lands, where Livistona palms cling to the cliffs. Witness Horseshoe Valley, Piccaninny Gorge, and the awe-inspiring striped domes of the Bungle Bungle, a World Heritage wonder.

## BB60 | Bungle Bungle Red Rock Gorges & Osmand Range

Flight time: 60 minutes | Cost: \$999 per person

Journey across the ancient Osmand Ranges, where rolling peaks stretch to the horizon. Continue to Purnululu National Park to admire the vibrant red rock gorges and the lush landscapes of Horseshoe Valley and Piccaninny Gorge. End your adventure with unparalleled views of the Bungle Bungle domes and the dramatic Deep and "Y" Gorges – a truly unforgettable flight.



\*This HeliSpirit base is subject to the operational status of a third-party company. Please call us in advance to confirm tour availability.



# A Natural and Cultural Icon

Purnululu National Park is celebrated for its incredible landscapes and rich cultural heritage. Our tourism businesses work alongside the park's Traditional Custodians to share its stories and help protect it for future generations.

## Cultural Significance

This special place holds deep meaning for the Jaru and Gija peoples, with parts of the area traditionally used as gathering places. The park is jointly managed by its Traditional Custodians and the Department of Biodiversity, Conservation and Attractions, ensuring its cultural and environmental values are preserved.

We're proud to hold EcoTourism Australia and Respecting Our Culture accreditation, reflecting our commitment to protecting this ancient landscape. Guided tours, led by knowledgeable guides, explore the history of Aboriginal people who lived here for over 40,000 years. When possible, Indigenous cultural guides join tours to share their unique perspectives, however please note they may occasionally be unavailable due to cultural responsibilities.

## Environmental Significance

The park is home to an abundance of native flora and fauna, including over 600 plant species, 149 bird species, and many unique creatures like the Lerista bungle bungle skink, found nowhere else on Earth.

Protecting the park isn't without its challenges. Feral animals such as cats and cane toads threaten native wildlife, and bushfires remain a concern. Conservation efforts, including controlled burns and pest management, help to reduce these risks.

With World Heritage status, the park benefits from extra funding and strong protections to keep mining and other potential threats at bay. These combined efforts ensure Purnululu remains a remarkable destination where culture and nature thrive side by side.

## DID YOU KNOW?

The Bungle Bungle Range is more than 50 times the size of Uluru and remained undiscovered to tourists until 1983.





## PURNULULU FACTS

**UNESCO World Heritage Listed:** 5 July 2003

**World Heritage Site Size:** 5,239,723 hectares

**Conservation Reserve Buffer Zone:** 79,602 ha  
(NW of Purnululu)

**Traditional Custodians:** The Gija and Jaru Peoples

**Location:** East Kimberley

### CLIMATE

**Purnululu National Park has a tropical climate with two distinct seasons:**

- **Dry Season (April to October)**  
Warm, sunny days (20°C to 35°C) and cool nights.
- **Wet Season (November to March)**  
Hot and humid, with heavy rains and spectacular thunderstorms. Daytime temperatures often exceed 40°C.

**Average Annual Rainfall:** 600mm

**Height Above Sea Level:** Up to 250m

**Approximate Age:** 350 million years



Gain a true sense of the scale of this ancient landscape on a guided walk, where you'll learn about the history and cultural significance of the region. Next, take to the skies on a thrilling helicopter flight over the iconic Bungle Bungle Domes. Soar above hidden red rock gorges, Piccaninny Creek, and the unique beehive formations that helped earn Purnululu National Park its World Heritage status. Finally, spend the night under a blanket of stars in eco-friendly accommodation, and enjoy chef-prepared meals at Bungle Bungle Savannah Lodge.





**Bungle Bungle Guided Tours**  
Bookings 1800 899 029  
bookings@bbgt.com.au  
bbgt.com.au



**Bungle Bungle Savannah Lodge**  
Bookings 1800 682 213  
bookings@bbsl.com.au  
bbsl.com.au



**Aviair**  
Bookings 1800 095 500  
bookings@aviair.com.au  
aviair.com.au



**Helispirit**  
helispirit.com.au

**Purnululu**  
Bookings 08 9168 7335  
bungles@helispirit.com.au

**Bungle Bungle Caravan Park**  
Bookings 0408 273 335  
bbcp@helispirit.com.au

**Warmun**  
Bookings 0429 483 810  
warmun@helispirit.com.au



Please note all rates are valid for the 2025 season unless stated otherwise.

